

PERFECT LOCATION FOR YOUR
PEACEFUL LIVING

Elegant Pride

2 AND 3 BHK LUXURY APARTMENTS





2 AND 3 BHK LUXURY APARTMENTS

WHO SAYS
LUXURY LIVING IS FOR
THE CHOSEN FEW?
ELEGANT INTRODUCES
PRIDE
LUXURY HOMES
WITHIN EASY REACH.

With the **Elegant Pride** range of residences, **Elegant** unveils before you, a world of luxury that's now accessible like never before. How are we able to do this? By employing the expertise of the world's best architects and engineers, and using intelligent design, advanced construction techniques and using economies of scale.

Moreover, every **Elegant Pride** project has the stamp of the **Elegant Builders & Developers** - with its keen eye for detail and supreme quality standards.

After all, the Developers has a decade of experience, and a reputation as Bangalore premier real estate developer.

Elegant Pride is one among the many projects you can expect from us in the coming months.



Elegant *Pride*

2 AND 3 BHK LUXURY APARTMENTS



REFINING LIFESTYLE

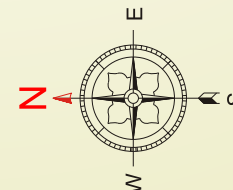
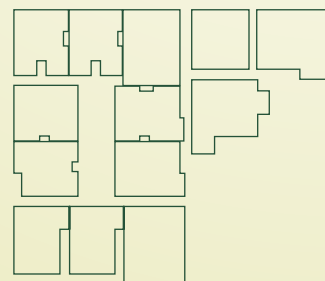
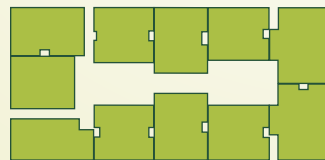
Each Blocks is exclusively designed and customized to establish quality constructions, costumer satisfaction and timely delivery.

MASTER PLAN



BLOCK-A

TYPICAL FLOOR PLAN



Elegant *Pride*

2 AND 3 BHK LUXURY APARTMENTS



FLAT # 001, 101, 201, 301, 401
 AREA - 1185.00 SFT
 FACING - EAST
 2 BHK



FLAT # 002, 102, 202, 302, 402
 AREA - 1120.00 SFT
 FACING - NORTH
 2 BHK



FLAT # 003, 103, 203, 303, 403
 AREA - 1180.00 SFT
 FACING - NORTH
 2 BHK



FLAT # 004, 104, 204, 304, 404
 AREA - 1080.00 SFT
 FACING - WEST
 2 BHK



FLAT # 005, 105, 205, 305, 405
 AREA - 1480.00 SFT
 FACING - WEST
 3 BHK



FLAT # 006,
 AREA - 1400.00 SFT
 FACING - NORTH
FLAT # 106, 206, 306, 406
 AREA - 1465.00 SFT
 FACING - EAST
 3 BHK



FLAT # 007, 107, 207, 307, 407
 AREA - 1120.00 SFT
 FACING - EAST
 2 BHK



FLAT # 008, 108, 208, 308, 408
 AREA - 1195.00 SFT
 FACING - NORTH
 2 BHK



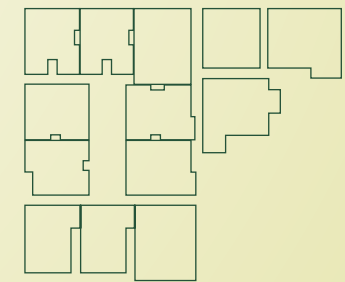
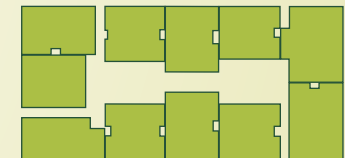
FLAT # 009, 109, 209, 309, 409
 AREA - 1105.00 SFT
 FACING - NORTH
 2 BHK



FLAT # 010, 110, 210, 310, 410
 AREA - 1100.00 SFT
 FACING - EAST
 2 BHK



FLAT # 011, 111, 211, 311, 411
 AREA - 1135.00 SFT
 FACING - WEST
 2 BHK

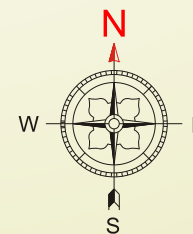


BLOCK-A



BLOCK-B

TYPICAL FLOOR PLAN



Elegant *Pride*

2 AND 3 BHK LUXURY APARTMENTS



FLAT # 001, 101, 201, 301, 401
 AREA - 1130.00 SFT
 FACING - WEST
 2 BHK



FLAT # 002, 102, 202, 302, 402
 AREA - 1130.00 SFT
 FACING - WEST
 2 BHK



FLAT # 003,
 AREA - 1215.00 SFT
 FACING - WEST
FLAT # 103, 203, 303, 403
 AREA - 1415.00 SFT
 FACING - NORTH
 3 BHK

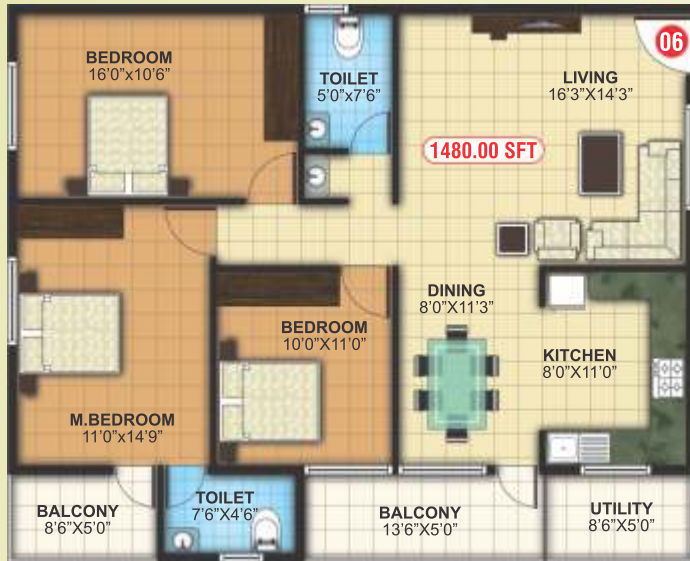


FLAT # 004, 104, 204, 304, 404
 AREA - 1210.00 SFT
 FACING - NORTH
 2 BHK

FLAT # 005, 105, 205, 305, 405
 AREA - 1195.00 SFT
 FACING - NORTH
 2 BHK



BLOCK-B



FLAT # 006, 106, 206, 306, 406
 AREA - 1480.00 SFT
 FACING - EAST
 3 BHK



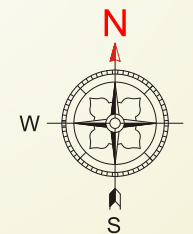
FLAT # 007, 107, 207, 307, 407
 AREA - 1055.00 SFT
 FACING - EAST
 2 BHK



FLAT # 008, 108, 208, 308, 408
 AREA - 1070.00 SFT
 FACING - EAST
 2 BHK



FLAT # 009, 109, 209, 309, 409
 AREA - 1145.00 SFT
 FACING - NORTH
 2 BHK



FLAT # 010, 110, 210, 310, 410
 AREA - 1165.00 SFT
 FACING - EAST
 2 BHK





In your busy life, every moment of free time is precious. That's why we've taken care to place every leisure facility at your disposal. So every day you spend at **Elegant Pride** is fun-filled and memorable.

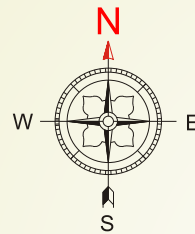
Take a leisurely stroll in the serene environs of the landscaped garden. Our homes boast of excellent amenities and facilities and not to forget, the tranquil setting amidst the city. **Elegant Pride** has all the following to delight you.

Elegant 
Pride

2 AND 3 BHK LUXURY APARTMENTS

Elegant *Pride*

2 AND 3 BHK LUXURY APARTMENTS



BLOCK-C

TYPICAL FLOOR PLAN





FLAT # 001, 101, 201, 301, 401
 AREA - 1105.00 SFT
 FACING - WEST
 2 BHK



FLAT # 002, 102, 202, 302, 402
 AREA - 1515.00 SFT
 FACING - WEST
 3 BHK



FLAT # 003, 103, 203, 303, 403
 AREA - 1430.00 SFT
 FACING - EAST
 3 BHK



Elegant Pride

2 AND 3 BHK LUXURY APARTMENTS

Elegant Builders & Developers are Professional Builders and Promoters in Bangalore. Our aim is to provide reliable, cost-effective, hassle-free, expedient and trusted Property services to our esteemed customers. We Believe in “**Your Comfort is Our Priority**” and keeping this in mind we have set high standards for ourselves to achieve the goal

Elegant Pride, located in Srirampura, Jakkur, Bengaluru North Taluk, consisting of 2 & 3 bhk luxurious apartments are set to inspire all your senses. It is well connected to the outer ring road, This artery offer easy accessibility to educational institutions, IT Industries, Hyper markets, Hospital, Shopping centers, Restaurants. These apartments are especially designed on the principles of vastu and free flow of natural light and air.





Elegant 
Pride

2 AND 3 BHK LUXURY APARTMENTS

YOUR HAPPINESS
FOREVER

We believe in making happy homes, creating remarkable intimate
connection between world inside and the outside.

BLOCK-C, UNIT-1

TOTAL SALABLE AREA 1105 SFT.

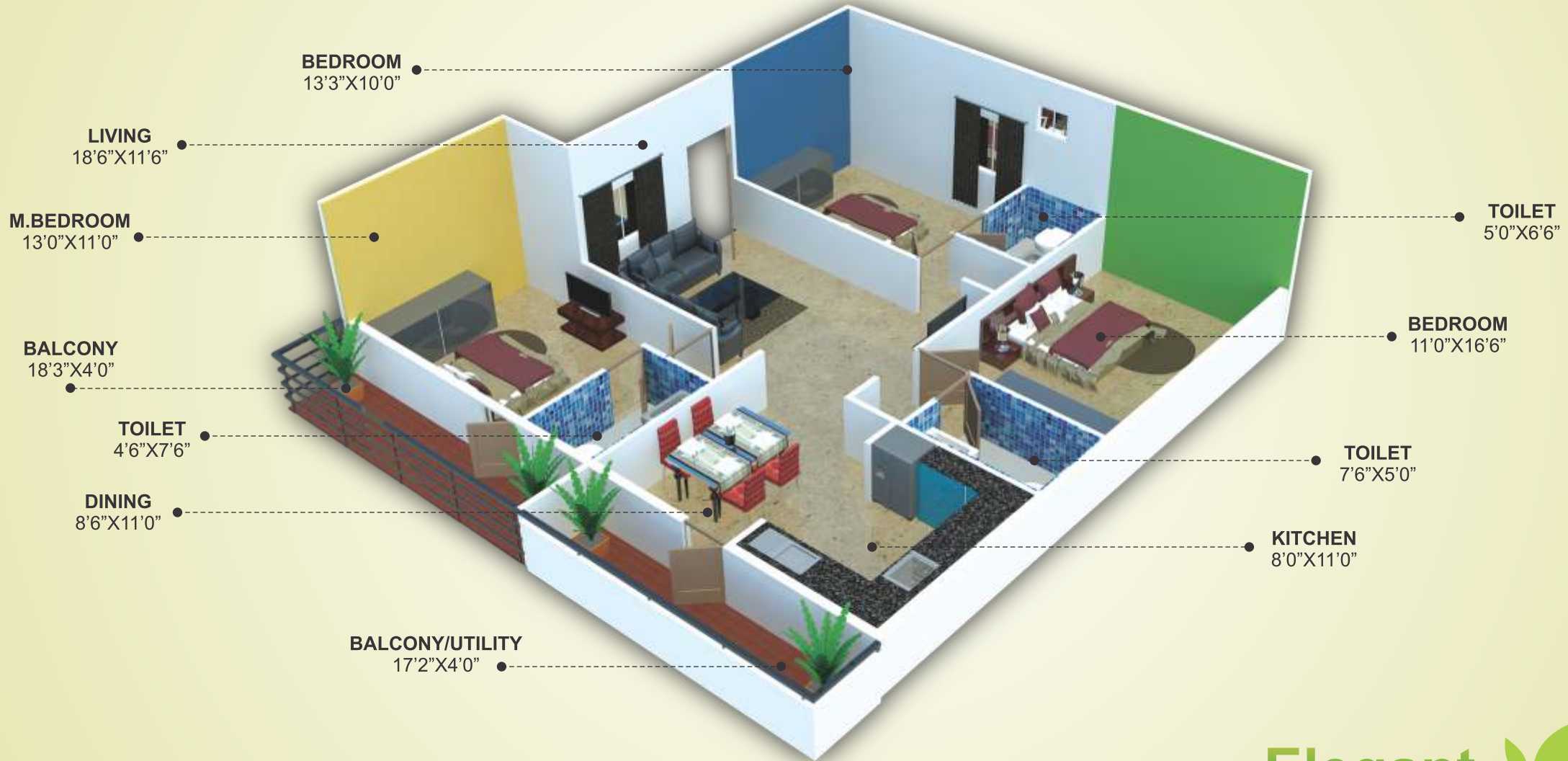
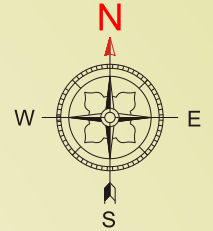
Elegant *Pride*

2 AND 3 BHK LUXURY APARTMENTS



BLOCK-C, UNIT-2

TOTAL SALABLE AREA 1515 SFT.



Elegant
Pride

2 AND 3 BHK LUXURY APARTMENTS

Specifications:



Building structure:

RCC Framed
Earthquake resistant structure.



Walls:

External walls of 6" Solid Blocks and
Internal walls with 4" Solid Blocks.



Windows:

3 Track aluminium windows with
5mm thick plain glass and
MS Safety grills



Doors:

Main door: Teak wood door frame with
elegantly finished flush shutters,
Bedrooms and kitchen doors:
Sal wood door frames with
flush shutters.



External and internal paint:

External wall: Ace paints of exterior wall
Internal walls: Emulsion paint for
interior walls and ceiling



Flooring:

Living, bedrooms and dining area &
kitchen vitrified tiles,

Toilets - Anti skid tiles flooring with
ceramic tiles dado up to
door height in master bedroom toilet,
Anti skid ceramic tiles flooring with
ceramic tiles dado upto
door height in other toilets,

Balconies - Anti skid ceramic tiles with water
proofing treatment.



Toilets:

Wash basins in all bathrooms,
CP fittings of ISI make,
Concealed piping system for cold &
hot water with provision for geysers,
Porcelain sanitary wares of reputed brand,
WC of reputed brand.



Water:

24 hours water supply from Borewell.



Electrical:

Wiring concealed with fire resistant wires,
Provision for split AC point in Master bedrooms,
Adequate points for lights, fans & other
plugs in bedrooms, toilets and kitchen with
modular switches of reputed brand,
Exhaust fans & geysers points in toilets & kitchen
plug points for chimney, water purifier, refrigerator
and other kitchen appliances in kitchen.



Kitchen:

Granite cooking platform with
stainless steel sink,
2' height glazed tiles daddoing above
the platform,
Reputed ISI make CP fittings.



Lobby & Lift:

Entrance lobby finished with
marble / granite flooring,
Five automated lifts of reputed
make with 6 passenger capacity,



Security features:

Round the clock security,
Intercom facility with
Entrance gate from each apartment,



TV & Telephone:

TV point in living & Master Bedrooms,
Telephone points in living &
Master bedrooms,



Power Back-up:

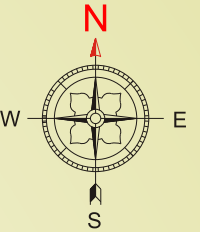
Full backup power for all lighting
points in the flats,
Additional backup power for
Common area, Lifts & Water pumps.





Amenities:

- CHILDREN'S PLAY AREA
- MULTIPURPOSE HALL
- JOGGING TRACK
- RAIN WATER HARVESTING
- 24 HOURS WATER SUPPLY
- MODERN GYM
- AUTOMATIC LIFTS
- GENERATOR BACKUP
- VAASTHU BASED CONSTRUCTION
- ROUND THE CLOCK SECURITY (24 HRS SECURITY GUARDS)
- INTERCOM FACILITY
- COVERED CAR PARKING
- SWIMMING POOL
- TABLE TENNIS
- BILLIARDS
- CCTV CAMERA



Near by Schools and College

- Canadian School
- Ryan International School
- Delhi Public School
- Stone Hill International School
- Trio World School
- Vidyanikethan School
- H.K.B.K College
- Krishna Jayanthi College
- Alpha Engineering College
- KNS Institute of Technology
- Manipal
- Aadarsh Presidency



Office Address:

341/1/3, Telecom Layout,
Srirampura, Jakkur post,
yalahanka, Bangalore - 560 064

Contact for Booking:



2 AND 3 BHK LUXURY APARTMENTS



Architect:
YUKTI
ARCHITECTURE.ENGINEERING.INTERIORS.
Ph: 080-26713029
E-mail: yuktiv@gmail.com